

EYP-ECL-0770-00080-1500-BFW01-0005

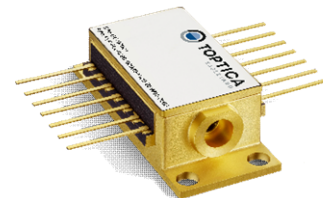
Revision 0.50

2022-11-07

SINGLE FREQUENCY LASER DIODES mini ECDL Laser

General Product Information

Product	Application
770 nm mini-ECDL Laser	Spectroscopy (K D1 line)
with hermetic 14-Pin Butterfly Housing (RoHS compliant)	Metrology
including Monitor Diode, Thermoelectric Cooler and Thermistor	Quantum Technology
with integrated Beam Collimation	



Absolute Maximum Ratings

Parameter	Symbol	Unit	min	typ	max
Storage Temperature	T_S	°C	-40		85
Operational Temperature at Case	T_C	°C	-40		85
Operational Temperature at Laser Chip	T_{LD}	°C	-5		50
Forward Current	I_F	mA			200
Reverse Voltage	V_R	V			2
Output Power	P_{opt}	mW			100
TEC Current	I_{TEC}	A			1.1
TEC Voltage	V_{TEC}	V			2.8

Measurement Conditions / Comments

Stress in excess of one of the Absolute Maximum Ratings may damage the laser. Please note that a damaging optical power level may occur although the maximum current is not reached. These are stress ratings only, and functional operation at these or any other conditions beyond those indicated under Recommended Operational Conditions is not implied.

Recommended Operational Conditions

Parameter	Symbol	Unit	min	typ	max
Operational Temperature at Case	T_{case}	°C	-20		65
Operational Temperature at Laser Chip	T_{LD}	°C	0		40
Forward Current	I_F	mA			180
Output Power	P_{opt}	mW	20		80

Measurement Conditions / Comments

measured by integrated Thermistor

Characteristics at $T_{LD} = 25^\circ \text{C}$ at BOL

Parameter	Symbol	Unit	min	typ	max
Center Wavelength	λ_C	nm	769	770	771
Target Wavelength	λ_T	nm		770.11	
Linewidth (FWHM)	$\Delta\lambda$	kHz		100	300
Mode-hop free Tuning Range	$\Delta\lambda_{tune}$	pm		20	
Sidemode Suppression Ratio	SMSR	dB	30	50	
Temperature Coefficient of Wavelength	$d\lambda / dT$	nm / K		0.008	
Current Coefficient of Wavelength	$d\lambda / dI$	nm / mA		0.001	

Measurement Conditions / Comments

reached within $T_{LD} = 0^\circ \dots 40^\circ \text{C}$
 A linewidth below 100kHz was measured in the time scale of 1ms
 By current tuning, at target wavelength
 $P_{opt} = 80 \text{ mW}$

EYP-ECL-0770-00080-1500-BFW01-0005

Revision 0.50

2022-11-07

SINGLE FREQUENCY LASER DIODES mini ECDL Laser



Characteristics at $T_{LD} = 25^\circ \text{C}$ at BOL cont'd

Parameter	Symbol	Unit	min	typ	max
Laser Current @ $P_{opt} = 80 \text{ mW}$	I_{LD}	mA			180
Slope Efficiency	η	W / A	0.6	0.8	1
Threshold Current	I_{th}	mA			90
Divergence parallel ($1/e^2$)	$\Theta_{ }$	mrad		2	
Divergence perpendicular ($1/e^2$)	Θ_{\perp}	mrad		2	
Beam Diameter horizontal ($1/e^2$)	$d_{ }$	mm		1.0	1.2
Beam Diameter vertical ($1/e^2$)	d_{\perp}	mm		0.8	1.2
Degree of Polarization	DOP	%		90	

Measurement Conditions / Comments

Threshold current may drift, no violation of the max. Value
 full angle, parallel to the base plate of the housing (see p. 3)
 full angle, perpendicular to base plate of the housing (see p. 3)
 parallel to the base plate of the housing (see p. 3)
 perpendicular to base plate of the housing (see p. 3)
 $P_{opt} = 80 \text{ mW}$; E field perpendicular to the base plate

Monitor Diode

Parameter	Symbol	Unit	min	typ	max
Monitor Detector Responsivity	I_{mon} / P_{opt}	$\mu\text{A}/\text{mW}$	10		400

Measurement Conditions / Comments

$U_R = 5 \text{ V}$

Thermoelectric Cooler

Parameter	Symbol	Unit	min	typ	max
Current	I_{TEC}	A		0.4	
Voltage	U_{TEC}	V		1.3	
Power Dissipation (total loss at case)	P_{loss}	W		0.5	
Temperature Difference	ΔT	K			50

Measurement Conditions / Comments

$P_{opt} = 80 \text{ mW}$, $\Delta T = 20 \text{ K}$
 $P_{opt} = 80 \text{ mW}$, $\Delta T = 20 \text{ K}$
 $P_{opt} = 80 \text{ mW}$, $\Delta T = 20 \text{ K}$
 $P_{opt} = 80 \text{ mW}$, $\Delta T = |T_{case} - T_{LD}|$

Thermistor (Standard NTC Type)

Parameter	Symbol	Unit	min	typ	max
Resistance	R	$k\Omega$		10	
Beta Coefficient	β			3892	
Steinhart & Hart Coefficient A	A			1.1293×10^{-3}	
Steinhart & Hart Coefficient B	B			2.3410×10^{-4}	
Steinhart & Hart Coefficient C	C			8.7755×10^{-8}	

Measurement Conditions / Comments

$T_{LD} = 25^\circ \text{C}$
 $R_1 / R_2 = e^{\beta(1/T_1 - 1/T_2)}$ at $T_{LD} = 0^\circ \dots 50^\circ \text{C}$
 $1/T = A + B(\ln R) + C(\ln R)^3$
 T: temperature in Kelvin
 R: resistance at T in Ohm

EYP-ECL-0770-00080-1500-BFW01-0005

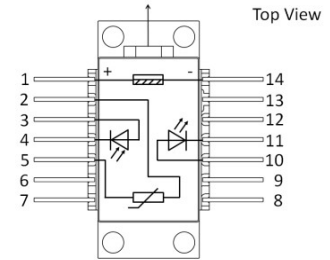
Revision 0.50

2022-11-07

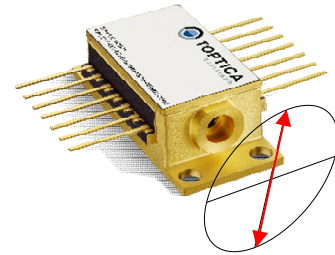
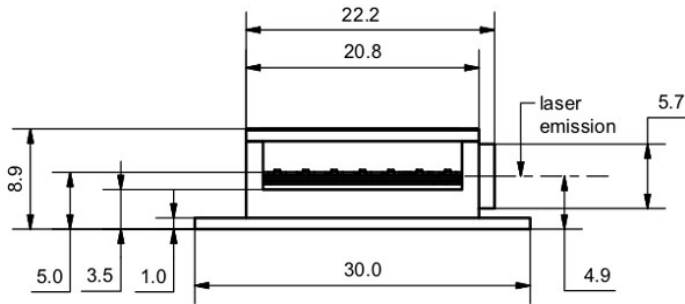
SINGLE FREQUENCY LASER DIODES mini ECDL Laser

Pin Assignment

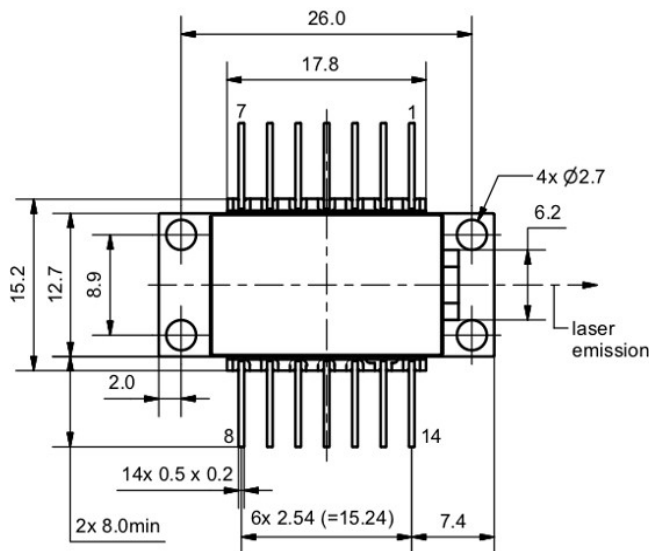
1	Thermoelectric Cooler (+)	14	Thermoelectric Cooler (-)
2	Thermistor	13	Case
3	Photodiode (Anode)	12	not connected
4	Photodiode (Cathode)	11	Laser Diode (Cathode)
5	Thermistor	10	Laser Diode (Anode)
6	not connected	9	not connected
7	not connected	8	not connected



Package Drawings



E field perpendicular to base plate



AIZ-15-0729-0947

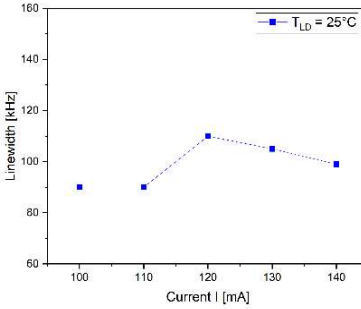
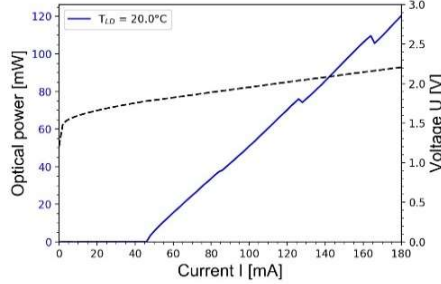
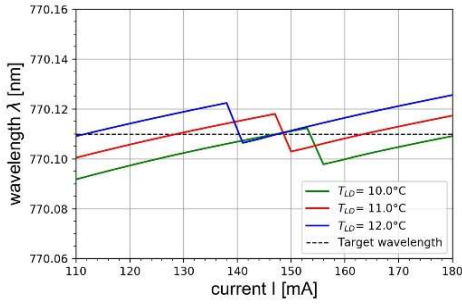
EYP-ECL-0770-00080-1500-BFW01-0005

Revision 0.50

2022-11-07

SINGLE FREQUENCY LASER DIODES mini ECDL Laser

Typical Measurement Results



Performance figures, data and any illustrative material provided in this specification are typical and must be specifically confirmed in writing by eagleyard Photonics before they become applicable to any particular order or contract. In accordance with the eagleyard Photonics policy of continuous improvement specifications may change without notice.

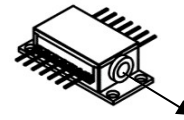
Unpacking, Installation and Laser Safety

Unpacking the laser diodes should only be done at electrostatic safe workstations (EPA). Though protection against electro static discharge (ESD) is implemented in the laser package, charges may occur at surfaces. Please store this product in its original package at a dry, clean place until final use. During device installation, ESD protection has to be maintained.

The DFB laser is sensitive against optical feedback, so an optical isolator may be required in order to avoid any disturbance of the emission spectrum. Operating at moderate temperatures on proper heat sinks will contribute to a long lifetime of the diode.

Avoid direct and/or indirect exposure to the free running beam. Collimating and focussing the free running beam with optics as common in optical instruments will increase threat to the human eye.

Performance figures, data and any illustrative material provided in this specification are typical and must be specifically confirmed in writing by eagleyard Photonics before they become applicable to any particular order or contract. In accordance with the eagleyard Photonics policy of continuous improvement specifications may change without notice.



Laser Emission



IEC 60825-1



Complies with 21 CFR 1040.10 and 1040.40